



TRAFFIC ADVISORY

Where: Peatt Road at Brock Avenue

When: Monday, May 15, 2017 and Tuesday, May 16, 2017, 7:00am to 7:00pm

What: Traffic Detour – Underground utility installation

Please be advised that on Monday May 15, 2017 and Tuesday May 16, 2017 southbound traffic along Peatt Road will be detoured as shown in Figure 1 and Brock Avenue between Scafe Road and Peatt Road will be closed to eastbound traffic as shown in Figure 2 to accommodate construction of a sewer service on Peatt Road at Brock Avenue.

Northbound traffic on Peatt Road will be maintained during construction.

Work is anticipated to take 2 days, possibly 3, and traffic control will be on-site directing traffic. Delays may be expected, motorists please be aware. We apologize for the inconvenience.

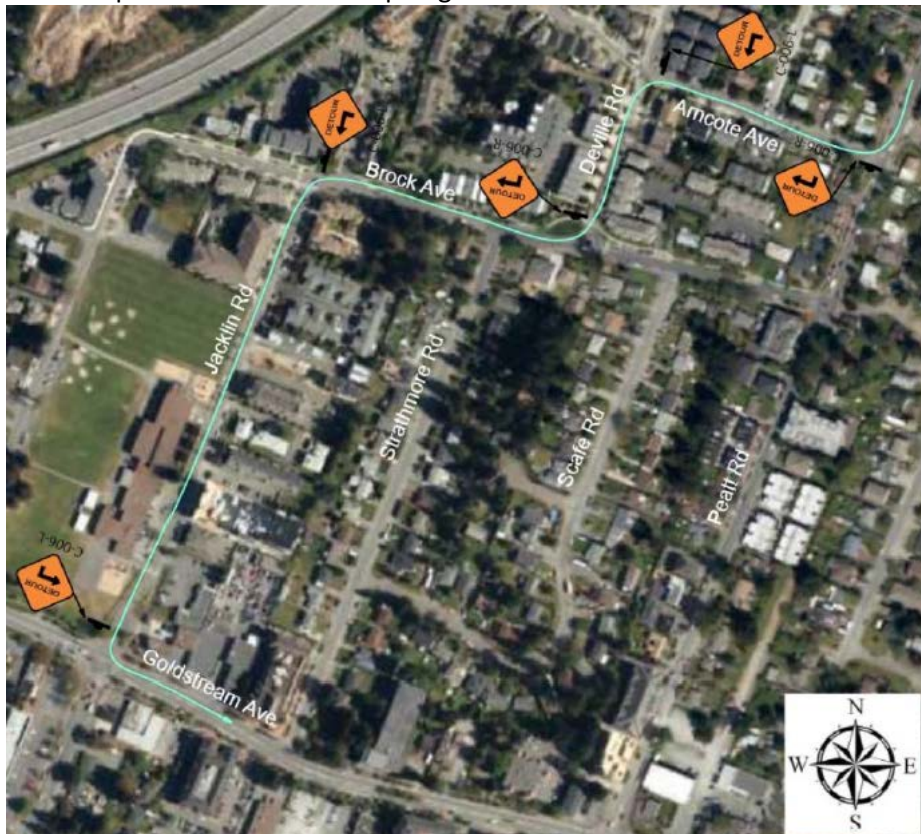


FIGURE 1



FIGURE 2