



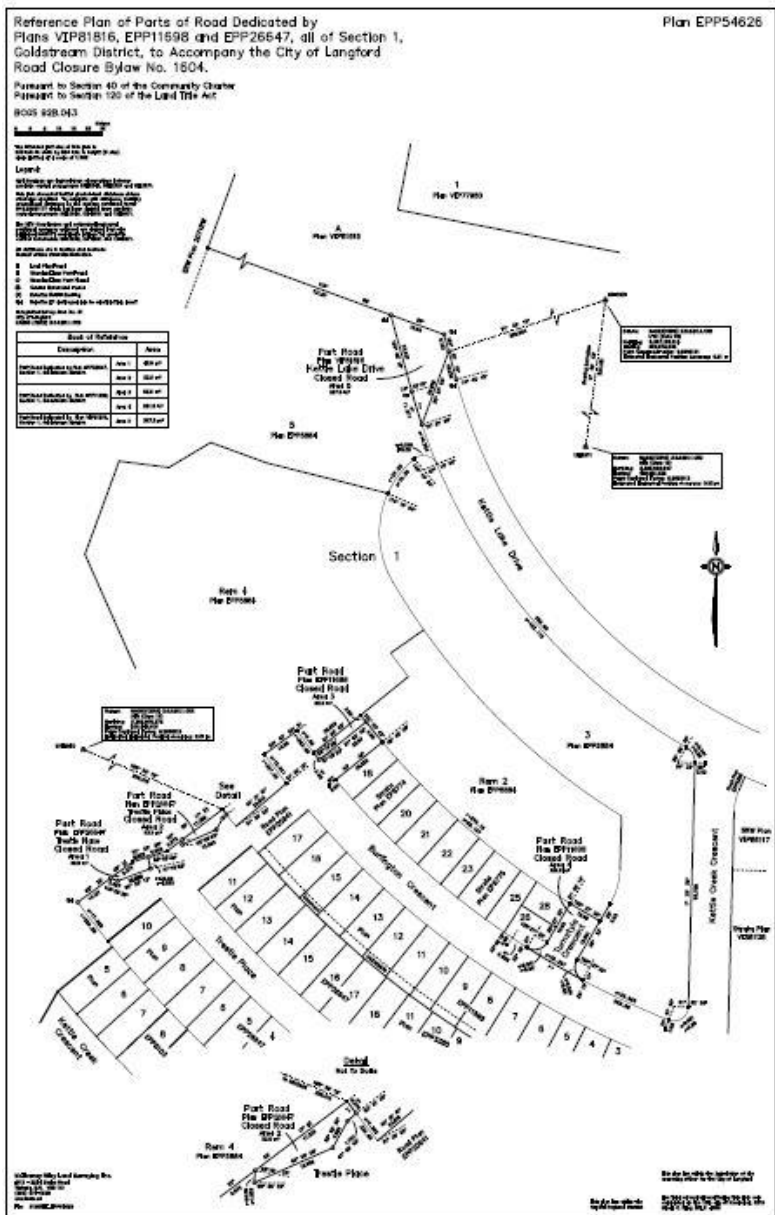
NOTICE OF ROAD CLOSURE AND DISPOSITION

The City of Langford hereby gives public notice of its intention to close and dispose of a portion of road, shown in heavy outline in Schedule 'A' below, known as portions of Kettle Lake Drive, Turnstyle Crescent and three sections of unnamed road dedication, dedicated as highway by Plan VIP81816, EPP11698 and EPP26647 respectively.

The portion, which makes up 0.08 hectares (0.2 acres) is intended to be removed as highway dedication and disposed of, will be considered by the Council of the City of Langford at its regular meeting at the City Hall, 3rd Floor, 877 Goldstream Avenue, on Monday, December 7th, 2015 at 7:00pm. Persons who consider they are affected by the Bylaw will be provided an opportunity to make representations to Council at the meeting, or by delivering a written submission to the Corporate Officer by 4:00 pm on that date.

The City of Langford intends to transfer the closed portion of road (800m²) as shown in Schedule 'A' to Romspen Mortgage Investment Fund, the owner of the abutting property (3300 Kettle Creek Crescent) in exchange for the land the owner will be responsible for constructing Park and Trail improvements at 2900 Westshore Parkway estimated at \$130,000.

Schedule 'A'



Jim Bowden
Corporate Officer