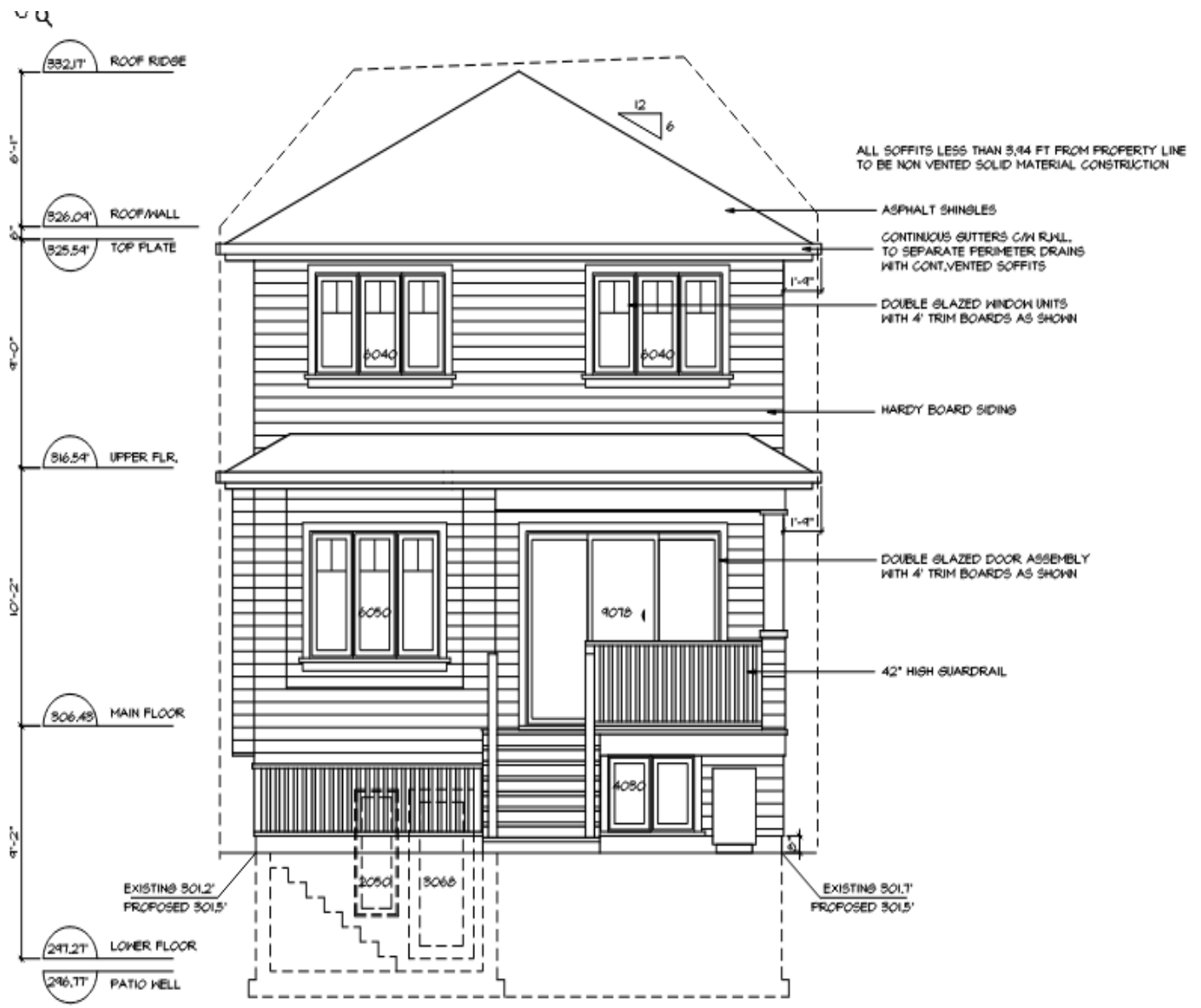
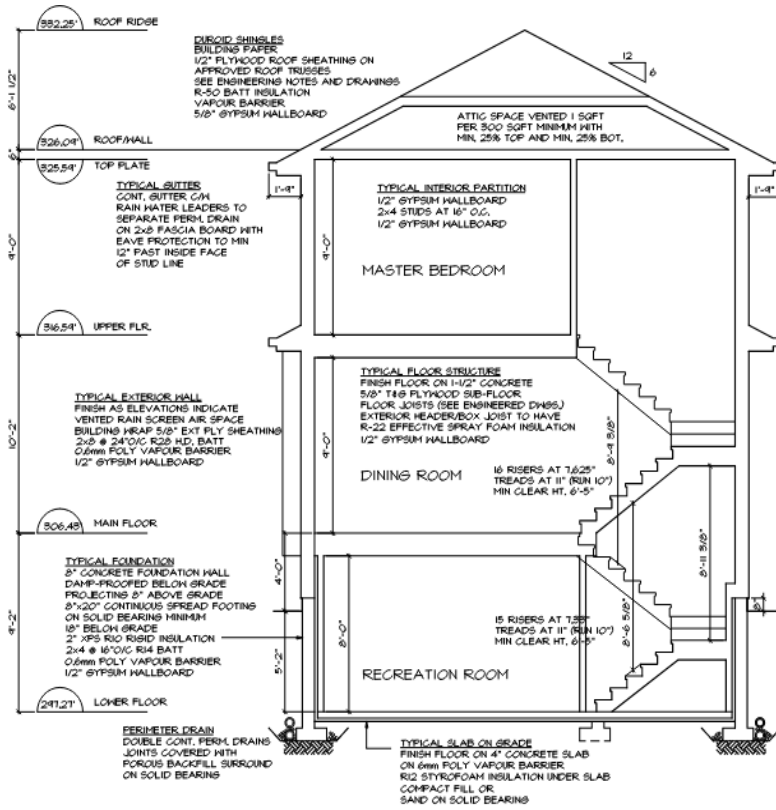


SOUTH ELEVATION
SCALE 1/4" = 1'-0"



NORTH ELEVATION
SCALE 1/4" = 1'-0"



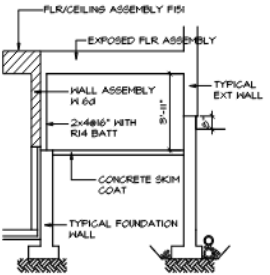
ALL SOFFITS LESS THAN 3.44 FT FROM PROPERTY LINE TO BE NON VENTED SOLID MATERIAL CONSTRUCTION

SUITE WALL & CEILING ASSEMBLY

WALL ASSEMBLY - W 6d
 Fire Resistance Rating 1 hr
 Sound Transmission Class (STC) 55
 2 LAYERS 1/2" TYPE 'X' GYPSUM BOARD
 2x4 HDOD STUDS SPACED 16" O.C.
 R-14 SOUND BATT INSULATION
 RESILIENT METAL CHANNELS @ 16" O.C.
 2 LAYERS 1/2" TYPE 'X' GYPSUM BOARD

FLOOR/CEILING ASSEMBLY - F 15i

Fire Resistance Rating 1 hr
 Sound Transmission Class (STC) 61
 FINISHED FLOOR ON 1/2" CONCRETE TOPPING
 5/8" T&G PLYWOOD SUBFLOOR
 WOOD JOISTS SPACED NOT MORE THAN 24" O.C.
 R-22 SOUND BATT INSULATION
 RESILIENT METAL CHANNELS @ 16" O.C.
 2 LAYERS 1/2" TYPE 'X' GYPSUM BOARD



CRAWL/SUITE SECTION

SCALE 1/4"=1'-0"
 TYPICAL CRAWL SPACE
 MAXIMUM CLEAR HEIGHT
 3'-11" VENTED 1 SOFT PER 500 SQFT FLR. AREA
 MINIMUM 2 VENTS.

CEA VERIFICATION GUIDELINES

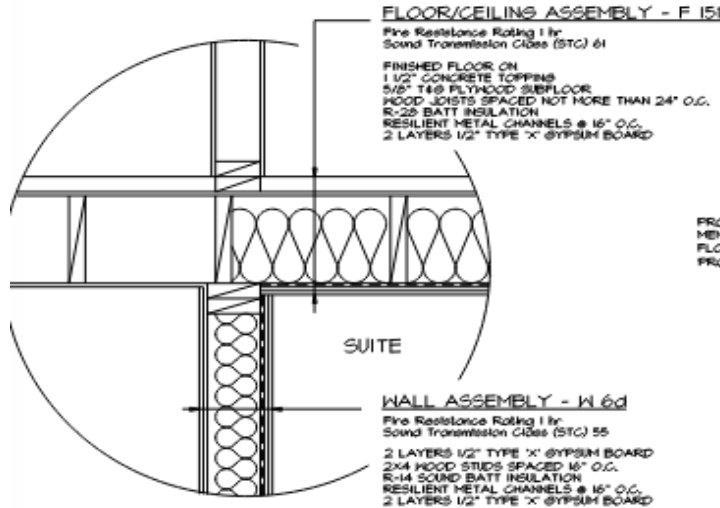
- 1.1 ABOVE GRADE WALLS:
 ON PLAN HALL INSULATION MEETS OR EXCEEDS R22 EFFECTIVE AND BULDER PROVIDED R22 GUIDE
- 1.2 ATTIC AND FLAT CEILING:
 ON PLAN ATTIC (R50) AND FLAT CEILING (R28) INSULATION MEETS OR EXCEEDS REG. NOM. R VALUES
- 1.3 FOUNDATION WALLS AND UNDER SLAB:
 ON PLAN HALL INSULATION MEETS OR EXCEEDS R22 EFFECTIVE, UNDER SLAB MEETS OR EXCEEDS R12 NOMINAL
- 1.4 EXPOSED FLOORS:
 ON PLAN HALL INSULATION MEETS OR EXCEEDS R28 NOMINAL
- 1.5 HEADERS:
 ON PLAN HALL INSULATION MEETS OR EXCEEDS R22 EFFECTIVE
- 1.6 CONTINUOUS INSULATION:
 INSULATION ON PLAN IS CONTINUOUS INCLUDING DUCTS OUTSIDE THE ENVELOPE
- 1.7 AIR BARRIER:
 AIR BARRIER IS PLANNED TO BE CONTINUOUS
- 2.1 WINDOWS:
 SPECIFIED WINDOWS AND GLASS DOORS MEET U51 (U4 RELOC) OR LOWER
- 2.2 SKYLIGHTS:
 SPECIFIED SKYLIGHTS ON PLANS ARE U51 2.4(OR LOWER)
- CEA TO INFORM THAT HRV WITH 65% OR BETTER SENSIBLE HEAT RECOVERY / IN CONDITIONED SPACE / ACCEPTABLE FOR FILTER MAINTENANCE INDICATED
- 3.2 FURNACE/BOILER:
 CEA TO INFORM MINIMUM 92% EFFICIENT APPL. NO SIDE
- 3.3 HOT WATER TANK OR ON DEMAND:
 CEA TO INFORM THAT DOMESTIC HOT WATER HEATER MUST BE 10% OR GREATER EFFICIENCY OR AT INDIRECT SOURCE. ELECTRIC TANK TO BE WRAPPED RSI 1.75 (R10)
- 3.4 HOT WATER PIPE:
 INFORM THAT THE FIRST 3m FROM AND THE LAST 1m TO ALL HOT WATER SHALL HAVE PIPE INSULATION WITH AN RSI OF 0.35 (R2)
- 3.5 RECIRCULATING SYSTEM:
 CEA TO INFORM THE ENTIRE PIPE SYSTEM MUST BE WRAPPED WITH PIPE INSULATION WITH RSI OF 0.35 (R2.4)

SCHEMATIC SECTION

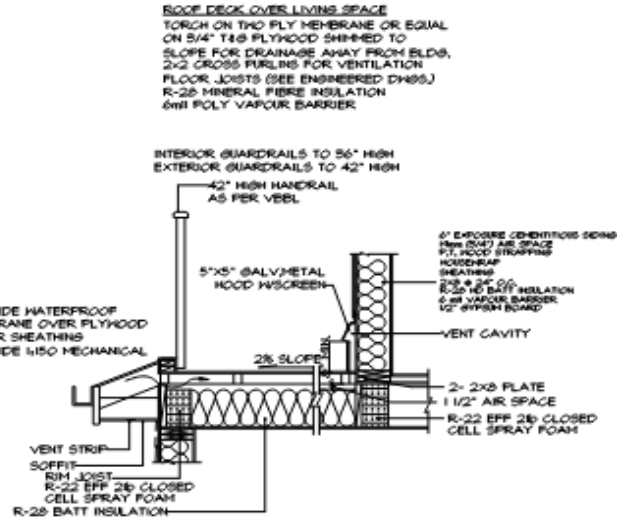
SCALE 1/4"=1'-0"

- SCUPPER OVERFLOWS TO BE PROVIDED AT ALL BALCONIES ENCLOSED WITH PARAPET WALLS
- INTERIOR GUARDRAILS TO 36" HIGH EXTERIOR GUARDRAILS TO 42" HIGH
- HANDRAILS ON BOTH SIDES OF STAIRS GREATER THAN 44" WIDE
- ALL INTERIOR FRAMING DIMENSIONS ARE TO CENTERLINE OF STUDS UNLESS NOTED OTHERWISE
- SECURITY BLOCKING TO BE PROVIDED AT ALL EXTERIOR DOORS
- BUILDING TO BE SPRINKLERED TO NFPA 15D
- SAFETY GLASS TO BE USED WITHIN 8'-0" OF DOOR ENTRY LOCKS, AT ENTRANCE DOORS AND SIDELIGHTS, NEAR BATHUBS AND JACUZZIS
- WATERPROOF BACKING MATERIAL TO BE PROVIDED AROUND BATHUBS AND SHOWERS
- COMBUSTION AIR TO BE SUPPLIED AT ALL SOLID FUEL BURNING APPLIANCES AT OR NEAR THE APPLIANCES

HALL ASSEMBLY	ASSEMBLY	EFFECTIVE R VALUE	EFFECTIVE RSI
2x8 @ 24" O.C. R-22 HD BATT	EXTERIOR AIR FILM	R- 0.17	RSI- 0.09
	CLADDING (HARDY BOARD)	R- 0.10	RSI- 0.05
	VENTED AIR SPACE (1/2" - 3/4" RAIN SCREEN)	R- 0.25	RSI- 0.15
	BUILDING WRAP	R- 0	RSI- 0
	5/8" EXTERIOR GRADE PLYWOOD SHEATHING	R- 0.62	RSI- 0.31
	2x8 @ 24" O.C. WITH R22 HD BATT	R- 14.55	RSI- 8.44
	0.6mm POLY UV A/V BARRIER	R- 0	RSI- 0
	1/2" GYPSUM HALL BOARD	R- 0.45	RSI- 0.25
	INTERIOR AIR FILM	R- 0.68	RSI- 0.32
	TOTAL EFFECTIVE R VALUE	R- 22.44	RSI- 8.45



SUITE WALL & CEILING ASSEMBLY
 SCALE 1" = 1'-0"



ROOF DECK VENTING AND PARAPET DETAIL
 SCALE 1/2" = 1'-0"

