

BUTLER CONCRETE AND AGGREGATE

Canada's Cleanest &
Greenest Concrete

February 22, 2022

Notice of Public Hearing - Z21-0016 - 1253, 1265, 1277, 1289,
1300 Valemount Court



OUR HISTORY



The "Butler Brothers" - Claude, Wally, Tom and Eric

Locally owned and operated, Butler Concrete and Aggregate Ltd. has been the leading producer of sustainable building materials on southern Vancouver Island since the 1930s.

We make a net positive impact on the local built environment by supporting communities, the environment, and innovation.

Today, we operate three gravel pits – Keating Cross Road, Sooke and Duncan – and supply ready-mix concrete from Keating Cross Road, Bay Street in Victoria and Sooke.

OUR SUSTAINABILITY STORY



Communities

Investing in the communities where we operate with time, cash, and products

1. Supporting healthy communities with donations to local sport teams
2. Supplying office space for local charity operations
3. 20+ years of donating to cancer research



Environmental Innovation

Reducing our carbon footprint in our operations and product offerings

1. First to use CarbonCure technology in concrete production. To date, we have saved 3,010 tonnes of CO2 emissions
2. First to implement Empire Hydrogen Fuel Enhancement System on fleet of concrete trucks yielding 5-25% reduction of CO2 emissions
3. First adopters of Slag and GUL which reduces CO2 emissions by 5% to 10%

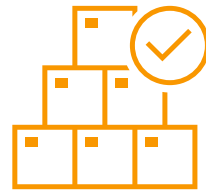
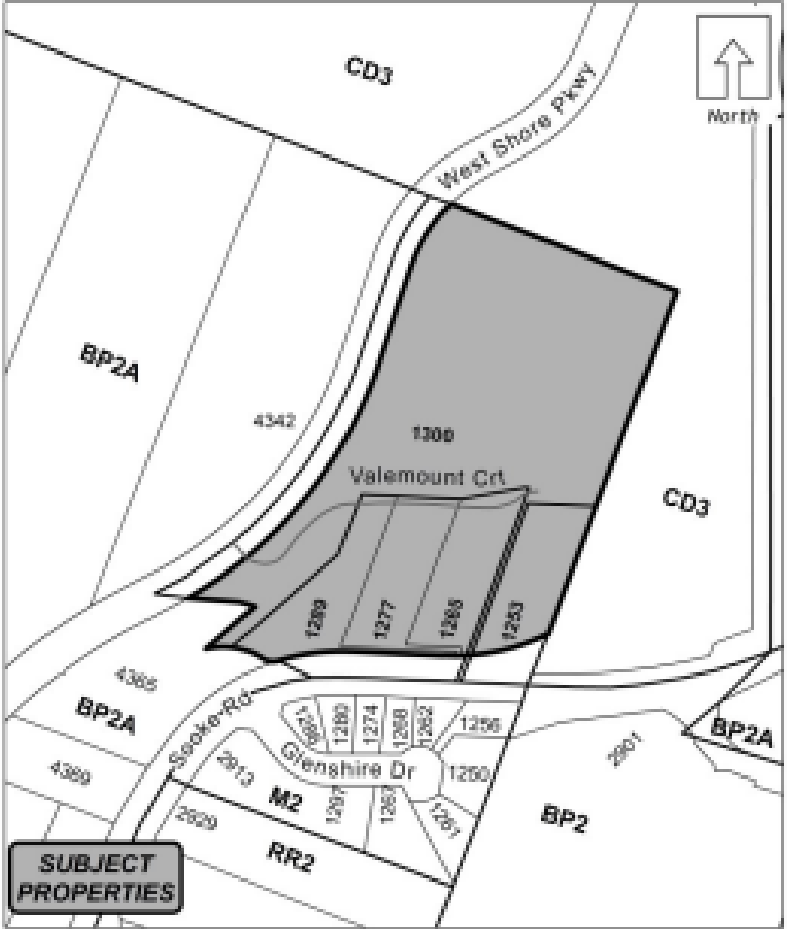


Transparency

Offering our stakeholders access to information and data regarding our concrete production business practices

1. Low Carbon Concrete backed by third-party verified and evidence-based Environmental Product Declarations
2. 47% lower CO2 emissions compared to the Canadian benchmark in 2020

RELOCATING TO LANGFORD



The City of Langford is rapidly developing and will benefit from the new Concrete and Aggregate site at Valemount Court



Transportation is a critical component within the concrete and aggregate industry. Situating concrete and aggregate sites near resources and construction sites greatly reduce transportation emission



Rezoning of the land will benefit 100+ families with employment opportunities. As one of the property occupants, Butler Concrete and Aggregate will bring an immediate 50 jobs to Langford

- | Carbon Footprint | Supply Chain | Employment | Community |
|--|--|--------------------------------------|---|
| Reduced emissions associated with transportation of concrete | Supply of low carbon concrete for local developments | 100 + Local employment opportunities | Commitment as a trusted community partner |

THE PLAN: ECONOMIC OPPORTUNITIES

Jobs



100% utilization of the land base for industry/job creation

30 - 50% Butler Concrete and Aggregate Operation

50 - 70% additional employment opportunities

Options for the site layout and access points are pending rezoning and building permits



THE PLAN: DEVELOPMENT PRECEDENTS



**THANK YOU
QUESTIONS?**